



Paradigm Imaging Group

Distributor of Large Format Scanning & Printing Solutions

888.221.7226(SCAN) or www.SCANtopia.com



DAYLIGHT RASTER IMAGE PROCESSOR

Precision Image Processing

RIP

A modern RIP software solution designed to produce precision image quality with superb color accuracy, delivering maximum output and increased productivity. Daylight RIP is created to seamlessly work in any printing environment, from CAD, to professional graphic arts, and signage applications offering feature rich job management and production tools.

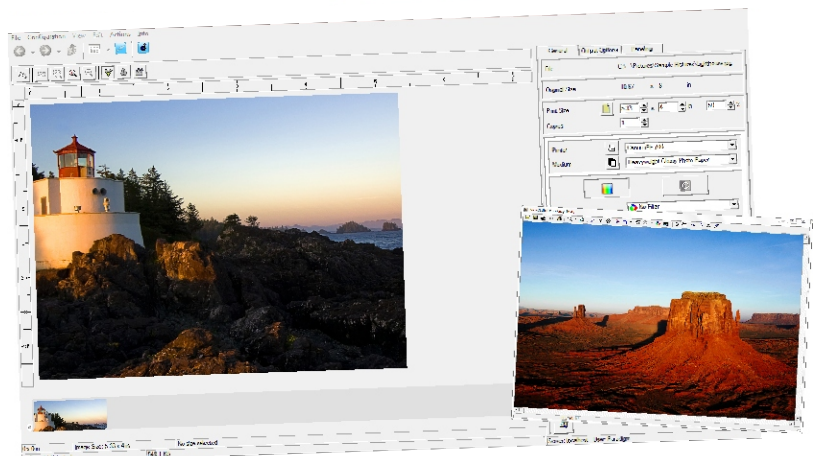
Daylight RIP is offered in various custom level packages, keeping you and your business in mind as the need grows.

Following packages are available:

Daylight RIP CAD

Daylight RIP PS/PDF

Daylight RIP Professional



Please see reverse for complete specifications

Key Features:

- Compatible with all major large format printers
- Precision color reproduction in L*a*b* Space and full support of sRGB, CMYK and HKS
- Advanced image enhancement tools and output options
- Integrated job editor capable of managing multiple jobs quickly and with ease
- Unattended batch mode, hot folder technology and job monitor
- Automated and simplified cost tracking with export function
- User management tools with full administration control
- Modern and user friendly interface with drag & drop functions

Daylight RIP General Specifications

	CAD	PS/PDF	Professional
Multiple Copies	9999	9999	9999
Reload Job	•	•	•
Nesting	•	•	•
Mirror	•	•	•
Add Print Margins	•	•	•
User Label	•	•	•
Technical Label	•	•	•
Autorotation (Paper Save)	•	•	•
Alignment (left/right/cent.)	•	•	•
Paneling	•	•	•
Backchanneling	•	•	•
Scaling	1-99999%	1-99999%	1-99999%
Import Raster Formats	•	•	•
HPGL, HPGL/2, HP-RTL, DWF	•	—	•
TruCAD (CAD Color Mgt)	•	n/a	•
PostScript, EPS, PDF	—	•	•
Spectrophotometer Profiling	◦	◦	◦
Profile Libraries	•	•	•
RGB/Lab Filter Editor	•	•	•
User Administration	•	•	•
Preview	•	•	•
2-Step Zoom	•	•	•
ICC Monitor Calibration	•	•	•
Roll Preview	•	•	•
Editor	•	•	•
Print from Editor	•	•	•
Save as	•	•	•
Job Editor	•	•	•
Nest	•	•	•
Collate	•	•	•
Sort/Rotate, Automated Paper-save	•	•	•
Edit in Job Editor	•	•	•
UI Languages	21	21	21
Cost tracker	•	•	•
Hints	•	•	•
Online-help	•	•	•
Printer Licenses			
included	1	1	1
unlimited optional	•	•	•

• Standard ◦ Optional