



new

EIS SUPRA



Large Format Multi-Function **Scan > Print > Copy**

EXPRESS IMAGING SYSTEM

Introducing the

NEW & IMPROVED EIS SUPRA!

Featuring:

- Enhanced color balancing
- Advanced gray scale scanning
- Superior paper handling
- Trouble-free maintenance
- New sleek design

Scanner

36" scan width with scan speeds up to 6-ips in B/W and 2-ips in color

Printer

High speed 36" wide, 2400 X 1200 dpi 5-color Photo Quality Printer for outstanding results from CAD/GIS applications to High-end Graphics

Document Imaging

Intuitive and easy to use ImageFLOW™ software for scanning, printing and copying functions featuring touch screen interface

Controller

Powerful Rocket™ Scanner Controller provides the needed horsepower for scanning & copying large documents featuring an Intel 2.6 Ghz Quad-Core processor with 2 GB high-speed ram and a 250GB hard drive



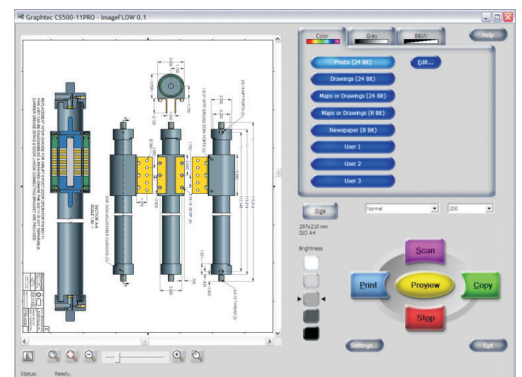
Flexible connectivity options - share the printer with other networked workstations and make copies to other networked printers

State of art technology for FM's, CAD/GIS and Reprographics - the EIS family of large format multi-function systems provides maximum flexibility to meet your scanning, copying and printing needs.



State-of-the-Art
Document Imaging Software

- Touch Screen Compatible
- Easy to Use Interface – Copy, Scan & Print
- Supports Current Graphtec Scanners
- Over 550 Printers Supported
- Hot Folder Print Que
- Includes over 325 ICC Output Profiles
- ICC Profile Editing
- Print Postscript Files



Scanner Specifications	Graphtec Sk280
Scanning Width	36" (centered) / 38" (max. document width)
Document Thickness	up to 0.8mm (including the carrier sheet)
Optical Resolution	600 dpi
Interpolated Resolution	upto 1200 dpi
Main scanning system	Contact Image System (five A4 sensors in a zigzag pattern)
Max. Scanning speed at 400 dpi: (High Speed Normal High Quality)	
_ Monochrome	6.0 3.5 3.0 inches/sec.
_ Gray	6.0 3.5 3.0 inches/sec.
_ Color (8-bit, 24-bit)	2.0 1.0 0.75 inches/sec.
Scanning precision	+ -0.1% or + -1 pixel, whichever is larger
Gradation	Monochrome: Bi-level, intermediate tones (dithering, error diffusion) Gray: 256 shades Color: 24-bit
Threshold value	A DSP (digital signal processor) enables automatic setting of the threshold value (monochrome scans only)
Color space	RGB
Sensor	
_ Total number of pixels captured	22,020 x RGB = 66,060
_ Light source	LED, RGB
_ Output	Color : 42bits/pixel, Grayscale : 14bits/pixel
Interface	USB 2.0 (High Speed)
Rated Power Supply	100 to 120/200 to 230 VAC + -10%, 50/60 Hz
External Dimensions (w/ stand)	46.65 x 28.15 x 37.99 inches
Weight (approx. incl. the std.)	38kg / 84lbs

Printer Specifications	Canon iPF imagePROGRAF 750
Printing System	5-Color Dye & Pigment Based Inks (Dye - CMYK / Pigment - Matte Black MBK)
Print Head Technology	FINE - (Full Lithography Ink-Jet Nozzle Engineering)
Number of Nozzles	2,560 per Color 5,120 Matte Black
Ink Capacity	130ml per color
Media Width	Roll Feed: 10-36" Wide Cut Sheet: 8-36" Wide
Printable Margins	Roll Feed: all sides (.12") 3mm or 0" for Borderless Cut Sheet: all sides (.12") 3mm
Media Thickness	0.07 - 0.8mm
Operating System	Windows 98se/Me/2000/XP/2003 Server, MAC OS 9.1/X 10.2-10.4 Built-in: USB 2.0 High Speed,
Interface	10/100Base-T/TX Optional: IEEE1394 Firewire AC (100-240V) 50-60Hz
Power Supply	43.2" x 59.3" x 29.6"
Dimensions	(1097mm x 1507mm x 752mm)
Weight (w/ stand)	Approx. 139 lb. (58.8kg)

Scanner Controller	Rocket Specifications
Operating System	Windows XP® Professional
Processor	Intel Core 2 Quad-core Q8400 2.6Ghz
Memory	2 GB DDR PC2-5300
Hard Drive	250GB SATA-150 (7200 rpm) 8MB Cache
CD/DVD	CD/DVD R±RW Combo Drive
Networking	10Mb/s and 1GB/s Fast Ethernet
Keyboard	Mini 101 Keyboard w/ Touch Pad
Monitor	15" Touch Screen Panel (1280x1024)
Onboard Graphic	Integrated Intel X4500 256bit

EIS Supra	
Combined Weight (Scanner, Stand, Printer & Controller)	249 lbs.
Foot Print Size (height, length & width)	59" h x 77" l x 36" w